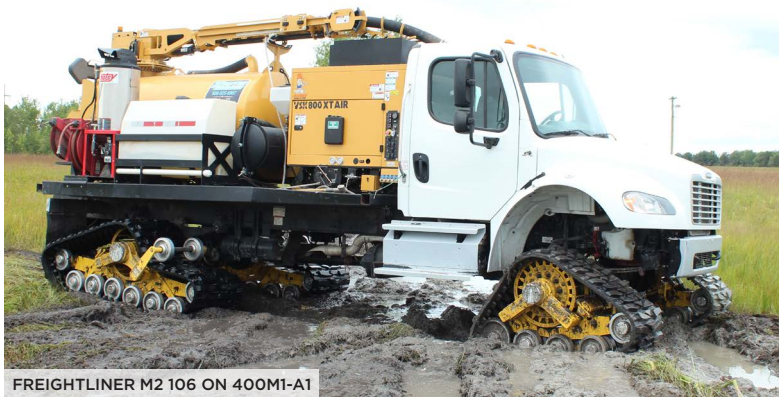


400 SERIES



SPECIFICATIONS	400M1-A1
TYPE OF VEHICLE	Commercial
RECOMMENDED MAX GVW	40,000 lbs GVW
FRAME CONSTRUCTION	Steel
STEERING ASSIST UPGRADE (adds 25 lbs)	Yes
ASSEMBLY WEIGHT	Front: 810 lbs / Rear: 1,755 lbs
INTERNAL SUSPENSION	Concentric Pivot with Independent Offset Rocker Arm
TRACK TREAD WIDTH	Front: 20" / Rear: 30"
TRACK TREAD STYLE	All-Terrain, Self-Cleaning
TRACK MATERIAL	Rubber with Internal Composite Rods and Cord
RECOMMENDED OPERATING TEMP	(Ambient) -40° to +130°
AXLE HEIGHT	25.5"
GROUND CONTACT LENGTH	(Hard Surface) Front: 36" - Rear: 60" / (Soft Surface) Front: 65" - Rear: 96"
GROUND CONTACT SURFACE AREA	Front: 710 sq in min - Rear: 1,807 sq in min / Front: 1,300 sq in max - Rear: 2,871 sq in max
SPROCKET DIAMETER	24"
WHEELS TYPE	Front: (11) 10" x 2.5" - (3) 13" x 2.5" / Rear: (22) 10" x 2.5"
ROAD WHEEL COUNT	Front: 12, 3 rows / Rear: 16, 3 rows
WHEEL MATERIAL	UMHW / Rubber
PAINT COLOR	Yellow (Standard, other colors available)

* ALL SPECS ARE PER CORNER



FREIGHTLINER M2 106 ON 400M1-A1



FREIGHTLINER M2 106 ON 400M1-A1